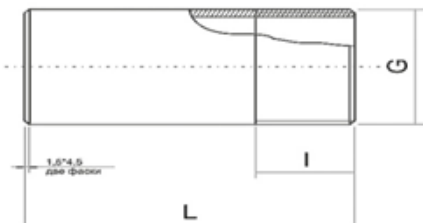


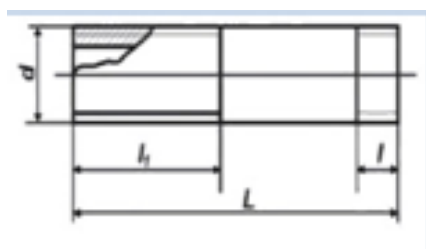


Filet din oțel, sudură x M



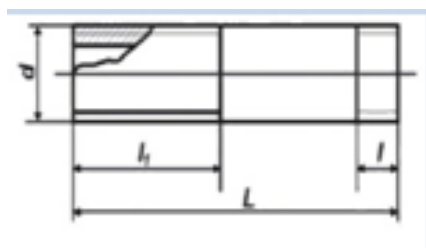
COD	Dimensiune (mm*țoli)	Țeavă - OD (mm)	L (mm)	I (mm)
1191200	15x1/2"	21,3	37	9
1191201	20x3/4"	26,8	40	10,5
1191202	25x1"	33,5	45	11
1191203	32x1 1/4"	42,3	48	13
1191204	40x1 1/2"	48,3	48	15
1191205	50x2"	60,3	60	17
1191206	65x2 1/2"	76,1	68	20
1191207	80x3"	88,9	80	22
1191208	100x4"	114,3	80	30

Zgon din oțel, MxM



COD	Dimensiune (mm*țoli)	Țeavă - OD (mm)	L (mm)	l1 (mm)	I (mm)
1180512	15x1/2"	21,3	95	40	9
1180518	20x3/4"	26,8	100	45	10,5
1180525	25x1"	33,5	115	50	11
1180532	32x1 1/4"	42,3	120	55	13
1180540	40x1 1/2"	48,3	130	60	15
1180550	50x2"	60,3	130	65	17

Zgon complet din oțel, MxM



COD	Dimensiune (mm*țoli)	Țeavă - OD (mm)	L (mm)	l1 (mm)	I (mm)
1090012	15x1/2"	21,3	95	40	9
1090034	20x3/4"	26,8	100	45	10,5
1090100	25x1"	33,5	115	50	11
1090114	32x1 1/4"	42,3	120	55	13