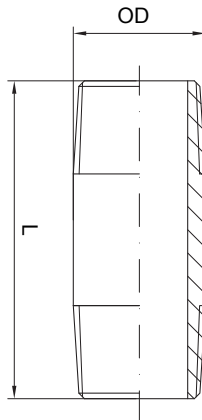




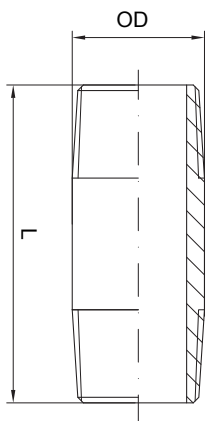
## Niplu din oțel galvanizat, MxM



COD	Dimensiune (mm*țoli)	Țeavă - OD (mm)	L (mm)
1062050	15x1/2"	21,3	50
1062060	15x1/2"	21,3	60
1062100	15x1/2"	21,3	100
1063060	20x3/4"	26,9	60
1063100	20x3/4"	26,9	100
1063120	20x3/4"	26,9	120
1063150	20x3/4"	26,9	150
1063200	20x3/4"	26,9	200
1063250	20x3/4"	26,9	250
1063300	20x3/4"	26,9	300
1063400	20x3/4"	26,9	400
1063500	20x3/4"	26,9	500
1063800	20x3/4"	26,9	800
1063900	20x3/4"	26,9	1000
1064060	25x1"	33,7	60
1064080	25x1"	33,7	80
1064100	25x1"	33,7	100
1064200	25x1"	33,7	200
1064250	25x1"	33,7	250
1064300	25x1"	33,7	300
1064500	25x1"	33,7	500
1064900	25x1"	33,7	1000

COD	Dimensiune (mm*țoli)	Țeavă - OD (mm)	L (mm)
1065060	32x11/4"	42,4	60
1065100	32x11/4"	42,4	100
1065150	32x11/4"	42,4	150
1065200	32x11/4"	42,4	200
1065400	32x11/4"	42,4	400
1066060	40x11/2"	48,3	60
1066100	40x11/2"	48,3	100
1066120	40x11/2"	48,3	120
1066150	40x11/2"	48,3	150
1066200	40x11/2"	48,3	200
1067060	50x2"	60,3	60
1067100	50x2"	60,3	100
1068100	65x21/2"	60,3	100
1069100	80x3"	60,3	100
1070100	100x4"	60,3	100

## Niplu din oțel, MxM



1162050	15x1/2"	21,3	50
1162150	15x1/2"	21,3	150
1162200	15x1/2"	21,3	200
1162250	15x1/2"	21,3	250
1162400	15x1/2"	21,3	400
1163040	20x3/4"	26,8	40
1163200	20x3/4"	26,8	200
1164040	25x1"	33,5	40
1164100	25x1"	33,5	100
1164150	25x1"	33,5	150
1165060	32x11/4"	42,3	63
1166060	40x11/2"	48,3	63
1166120	40x11/2"	48,3	120
1166250	40x11/2"	48,3	250
1167060	50x2"	60,3	64
1068120	65x21/2"	76,1	120
1069150	80x3"	88,9	150
1070180	100x4"	114	180