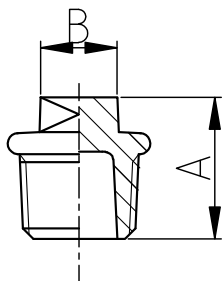




290

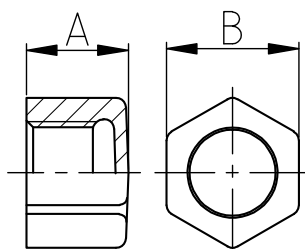
### Dop galvanizat, M



COD	Dimensiune (țoli)	Dimensiune (mm)	A (mm)	B (mm)
1029004	1/2"	15	26	11
1029005	3/4"	20	32	17
1029006	1"	25	36	19
1029007	1 1/4"	32	39	22
1029008	1 1/2"	40	41	22
1029009	2"	50	48	27
1029010	2 1/2"	65	54	32

300

### Capac galvanizat, F



COD	Dimensiune (țoli)	Dimensiune (mm)	A (mm)	B (mm)
1030004	1/2"	15	19	26
1030005	3/4"	20	22	23
1030006	1"	25	24	39
1030007	1 1/4"	32	27	48
1030008	1 1/2"	40	27	54
1030009	2"	50	32	66