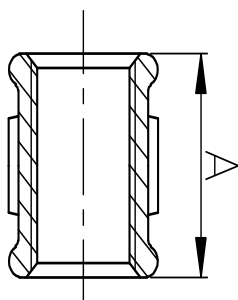




270

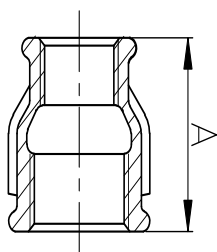
### Mufă galvanizată egală, FxF



COD	Dimensiune (țoli)	Dimensiune (mm)	A (mm)
1027004	1/2"	15	36
1027005	3/4"	20	39
1027006	1"	25	45
1027007	1 1/4"	32	50
1027008	1 1/2"	40	55
1027009	2"	50	65
1027011	3"	80	80
1027012	4"	100	94

240

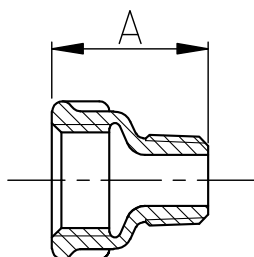
### Mufă galvanizată redusă, FxF



COD	Dimensiune (țoli)	Dimensiune (mm)	A (mm)
1024009	3/4"x1/2"	20x15	39
1024011	1"x1/2"	25x15	45
1024012	1"x3/4"	25x20	45
1024014	1 1/4"x1/2"	32x15	50
1024015	1 1/4"x3/4"	32x20	55
1024016	1 1/4"x1"	32x25	50
1024017	1 1/2"x1/2"	40x15	55
1024018	1 1/2"x3/4"	40x20	55
1024019	1 1/2"x1"	40x25	55
1024020	1 1/2"x1 1/4"	40x32	55
1024022	2"x3/4"	50x20	65
1024023	2"x1"	50x25	65
1024024	2"x1 1/4"	50x32	65
1024025	2"x1 1/2"	50x40	65

246

### Mufă galvanizată redusă, FxM



COD	Dimensiune (țoli)	Dimensiune (mm)	A (mm)
1024606	3/4"x1/2"	20x15	48
1024608	1"x1/2"	25x15	55
1024609	1"x3/4"	25x20	55
1024613	1 1/4"x1"	32x25	60