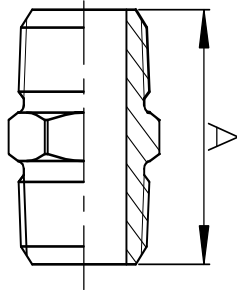




280

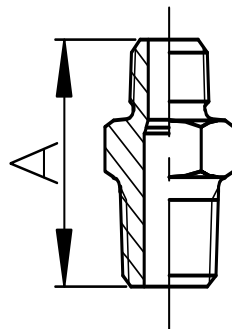
Niplu galvanizat egal, MxM



COD	Dimensiune (țoli)	Dimensiune (mm)	A (mm)
1028004	1/2"	15	44
1028005	3/4"	20	47
1028006	1"	25	53
1028007	1 1/4"	32	57
1028008	1 1/2"	40	59
1028009	2"	50	68
1028011	3"	80	83
1028012	4"	100	95

245

Niplu galvanizat redus, MxM



COD	Dimensiune (țoli)	Dimensiune (mm)	A (mm)
1024508	3/4"x1/2"	20x15	47
1024511	1"x1/2"	25x15	53
1024512	1"x3/4"	25x20	53
1024513	1 1/4"x1/2"	32x15	57
1024514	1 1/4"x3/4"	32x20	57
1024515	1 1/4"x1"	32x25	57
1024516	1 1/2"x3/4"	40x20	59
1024517	1 1/2"x1"	40x25	59
1024518	1 1/2"x1 1/4"	40x32	59
1024519	2"x1"	50x25	68
1024520	2"x1 1/4"	50x32	68
1024521	2"x1 1/2"	50x40	68
1024522	2 1/2"x1 1/2"	65x40	75
1024523	2 1/2"x2"	65x50	75
1024524	3"x2"	80x50	83
1024525	3"x2 1/2"	80x65	83