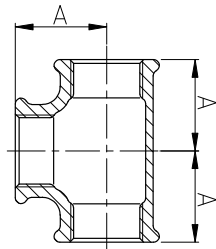




130

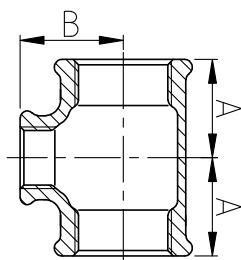
Teu galvanizat egal, 90° FxFxF



COD	Dimensiune (țoli)	Dimensiune (mm)	A (mm)
1013004	1/2"	15	28
1013005	3/4"	20	33
1013006	1"	25	38
1013007	1 1/4"	32	45
1013008	1 1/2"	40	50
1013009	2"	50	58
1013011	3"	80	78
1013012	4"	100	96

130R

Teu galvanizat redus, 90° FxFxF



COD	Dimensiune (țoli)	Dimensiune (mm)	A (mm)	B (mm)
1013021	3/4"x1/2"	20x15	30	31
1013026	1"x1/2"	25x15	32	34
1013027	1"x3/4"	25x20	35	36
1013031	1 1/4"x1/2"	32x15	34	38
1013032	1 1/4"x3/4"	32x20	36	41
1013033	1 1/4"x1"	32x25	40	42
1013036	1 1/2"x1/2"	40x15	36	42
1013037	1 1/2"x3/4"	40x20	38	44
1013038	1 1/2"x1"	40x25	42	46
1013039	1 1/2"x1 1/4"	40x32	46	48
1013041	2"x1/2"	50x15	38	48
1013042	2"x3/4"	50x20	40	50
1013043	2"x1"	50x25	44	52
1013044	2"x1 1/4"	50x32	48	54
1013045	2"x1 1/2"	50x40	52	55