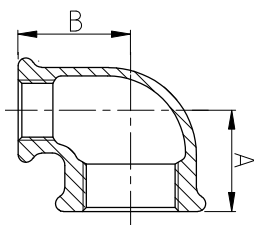




## 90R

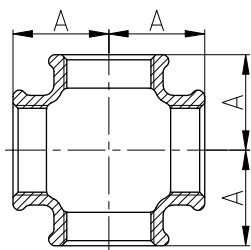
### Cot galvanizat redus, 90° FxF



COD	Dimensiune (țoli)	Dimensiune (mm)	A (mm)	B (mm)
1009020	3/4"x1/2"	20x15	30	31
1009021	1"x1/2"	25x15	32	34
1009022	1"x3/4"	25x20	35	36
1009025	1 1/4"x1"	32x25	40	42
1009027	1 1/2"x1 1/4"	40x32	46	48
1009030	2"x1 1/2"	50x40	52	55

## 180

### Cruce galvanizată egală, 90° FxF



COD	Dimensiune (țoli)	Dimensiune (mm)	A (mm)
1018003	1/2"	15	28
1018004	3/4"	20	33
1018005	1"	25	38
1018006	1 1/4"	32	45
1018007	1 1/2"	40	50
1018008	2"	50	58