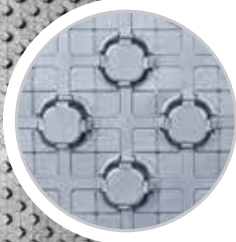


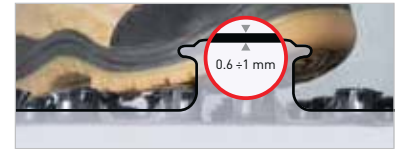


**Hydro  
Systems**



Double density version

Nob panel with thermoformed element especially designed nobs guaranties perfect fixing, the element is equipped on two sides with extra rows of nobs which allow a keyed and frictional connection preventing penetration of screed into the construction. Based on the high stability, the panel is well walk-on-able; made of expanded polystyrene grades EPS.



Description	PS foil		Thermoforming boards TF 90° - DEO					Acoustic boards - DES	
	TF 1	TF 10	TF 20	TF 30	TF 40	TF 50	TF 30-2	TF DD	
Code		<b>0715025</b>							
Board size (length x width)	mm	1450x850	1450x850	1450x850	1450x850	1450x850	1450x850	1450x850	1450x850
Effective board size (length x width)	mm	1400x800	1400x800	1400x800	1400x800	1400x800	1400x800	1400x800	1400x800
Effective board surface	m <sup>2</sup>	1,12	1,12	1,12	1,12	1,12	1,12	1,12	1,12
Thickness base insulation	mm	-	10	23	30	41	50	30-2	30-2
Nob height	mm	21,5	21,5	21,5	21,5	21,5	21,5	21,5	21,5
Total thickness	mm	22,5	31,5	44,5	51,5	62,5	71,5	51,5	51,5
Tube diameter	mm	14-17	14-17	14-17	14-17	14-17	14-17	14-17	14-17
Resistance at 10% compression	kPa	-	200	150	150	150	150	5	40
PS foil thickness	mm	1	0,6	0,6	0,6	0,6	0,6	0,8	0,6
Color of the PS foil	Col.	black	black	black	black	black	black	black	black
Pipe spacing	mm	50	50	50	50	50	50	50	50
Heat conduction I (EN 12667)	W/mK	-	0,035	0,035	0,035	0,035	0,035	0,040	
Thermal resistance R (EN 12939)	m <sup>2</sup> K/W	-	0,35	0,75	0,95	1,25	1,5	0,75	0,85
Impact sound reduction L <sub>w</sub>	dB	-	-	-	-	-	-	> 28	> 30
Stiffness group to EN 13163	SD	-	-	-	-	-	-	SD 30	SD 15
Fire class (EN 13501-1)	F	F	F	F	F	F	F	F	F
Boards per box	nr.	18	18	12	10	7	6	10	10
Board surface per box	m <sup>2</sup>	20,16	20,16	13,44	11,2	7,84	6,72	11,2	11,2
Box size	cm	152x88x22,5	152x88x43	152x88x43	152x88x43	152x88x39	152x88x39	152x88x43	152x88x43
Boxes per pallet	nr	12	6	6	6	7	7	6	6
Surface per pallet (h 300 cm)	m <sup>2</sup>	241,92	120,96	80,64	67,20	54,88	47,04	67,20	67,20
Surface per full truck (13,6 ldm)	m <sup>2</sup>	5.564,16	2.782,08	1.854,72	1.545,60	1.262,24	1.081,92	1.545,60	1.545,60